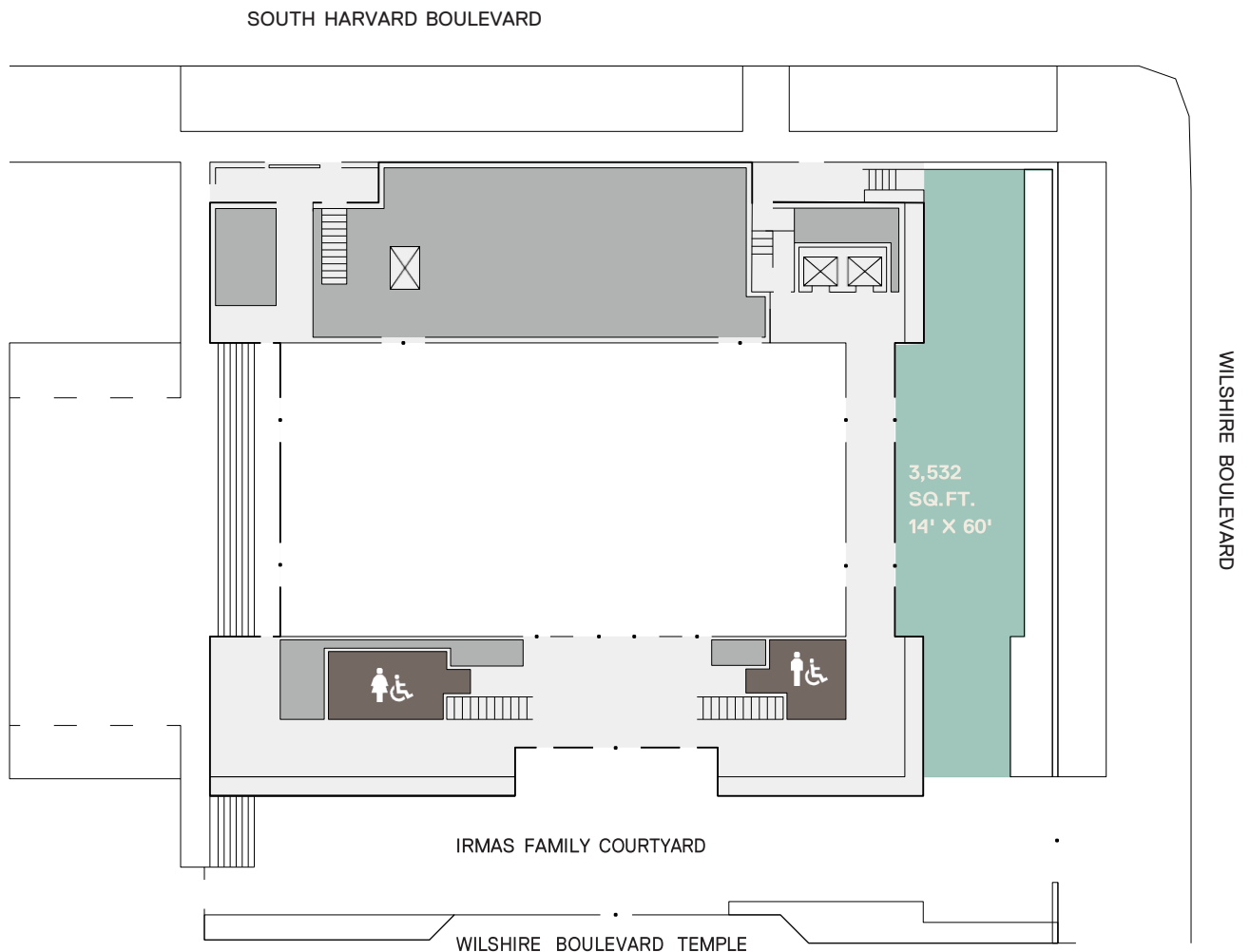


WILSHIRE PATIO

A magnificent open-air courtyard featuring beautiful landscaping and seasonal horticulture. The Wilshire Patio is ideal for small receptions and intimate seated dinners.

CAPACITY

SEATED: 50
RECEPTION: 116

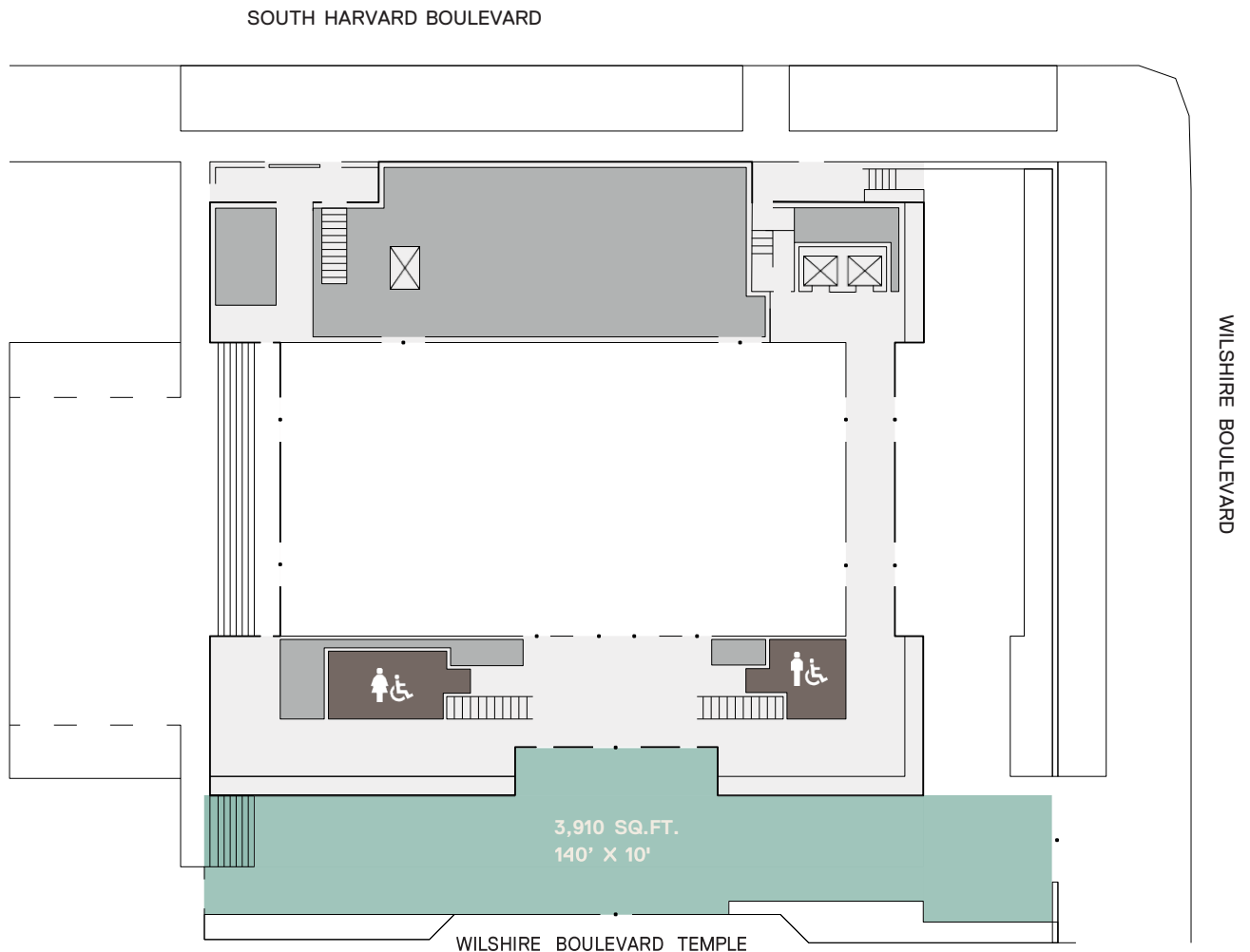


IRMAS FAMILY COURTYARD

A magnificent open-air courtyard featuring beautiful landscaping and seasonal horticulture. It is ideal for small receptions and intimate seated dinners.

CAPACITY

SEATED: 120
RECEPTION: 250

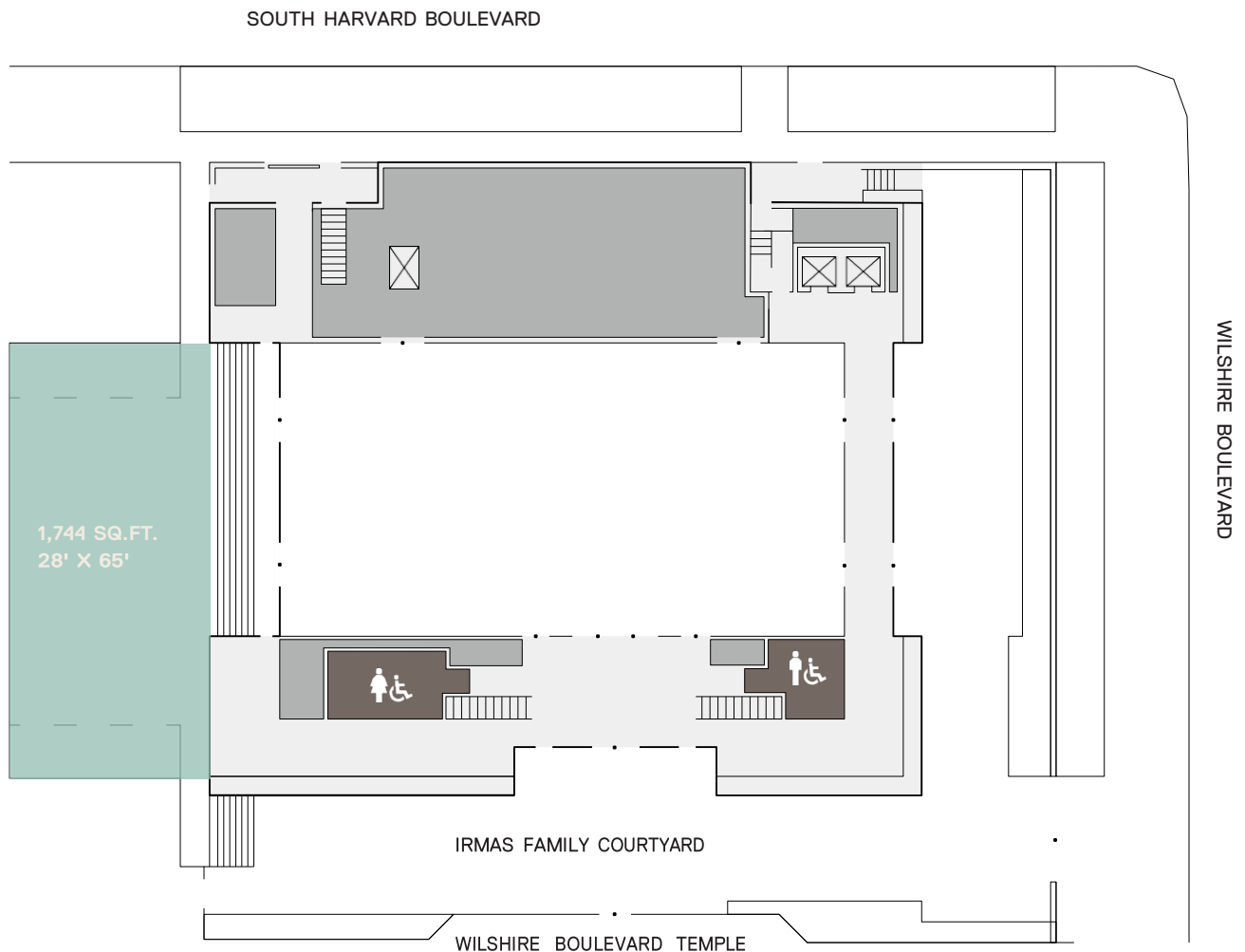


MARK SIEGEL FAMILY PATIO

An intimate outdoor patio nestled between the Irmias Pavilion and the Temple's historical school. Perfect space to use for your pre reception or post reception celebration.

CAPACITY

SEATED: 50
RECEPTION: 116

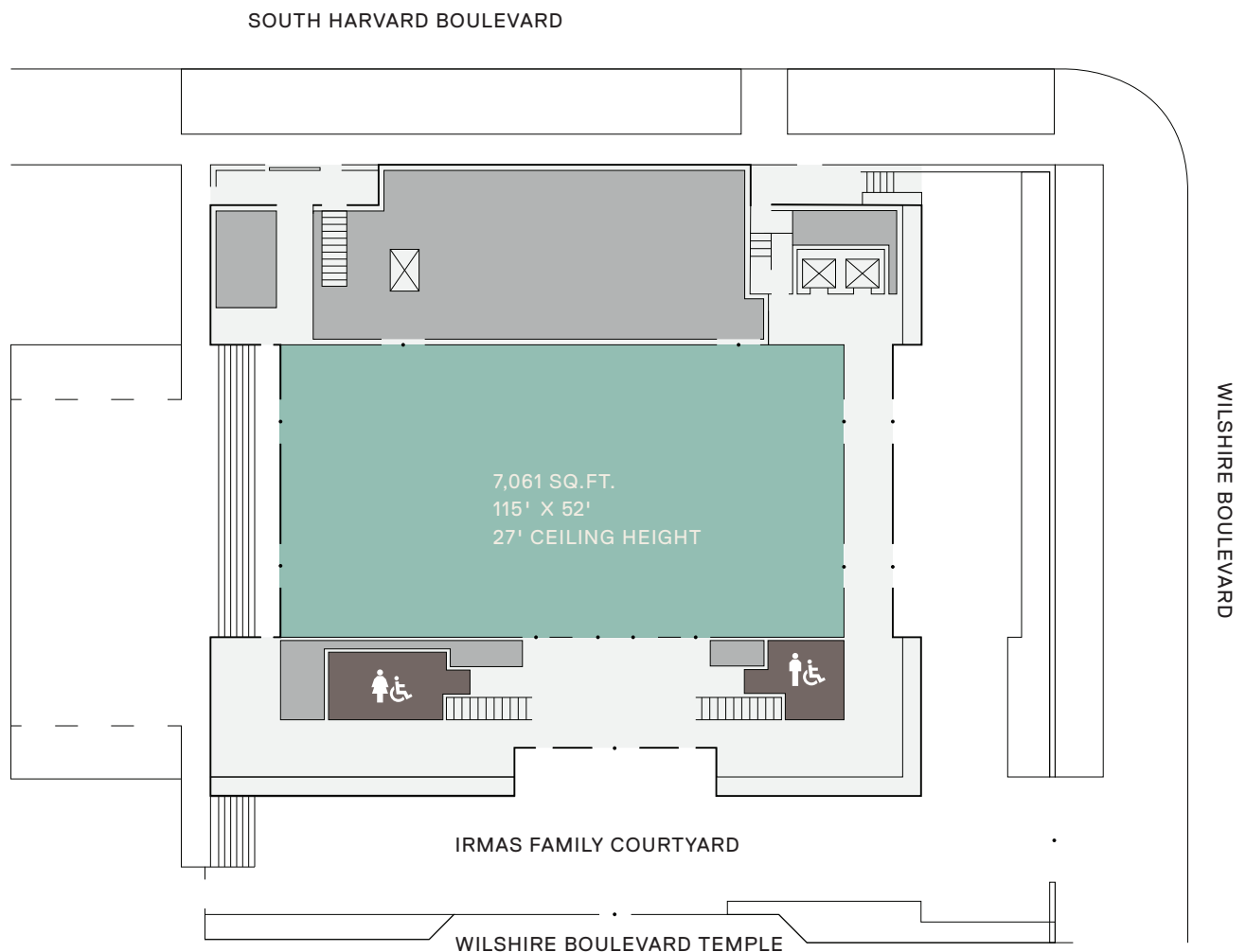


THE WENDY AND LEONARD GOLDBERG BALLROOM

One highlight of the Audrey Irmes Pavilion is the Wendy and Leonard Goldberg Ballroom. Crowned with a barrel-vaulted ceiling, this stunning Gaboon wood paneled room is an elegant spacious setting for your special event.

CAPACITY

SEATED: 425
RECEPTION: 750

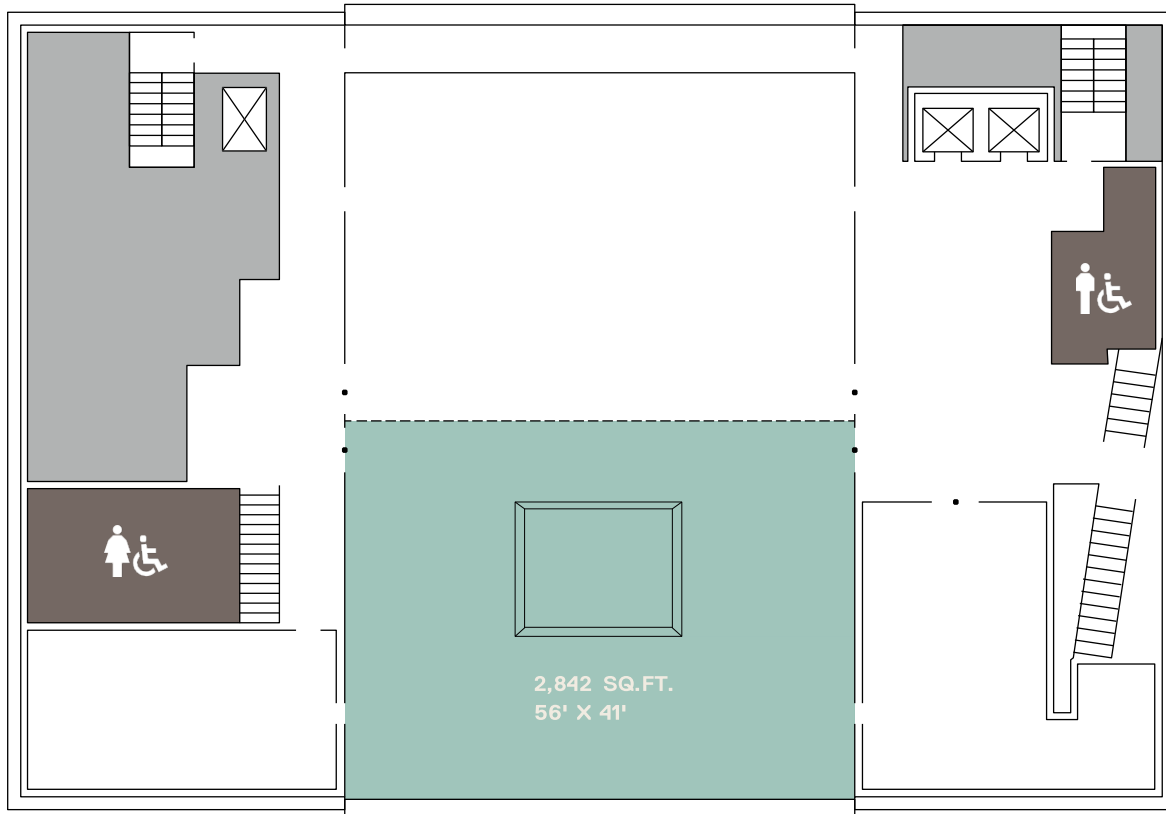


WEST TERRACE

A versatile light – filled outdoor terrace adjacent to the Chapel creating a unique indoor-outdoor event experience perfect for all types of events, large or small.

CAPACITY

SEATED: 100
RECEPTION: 225



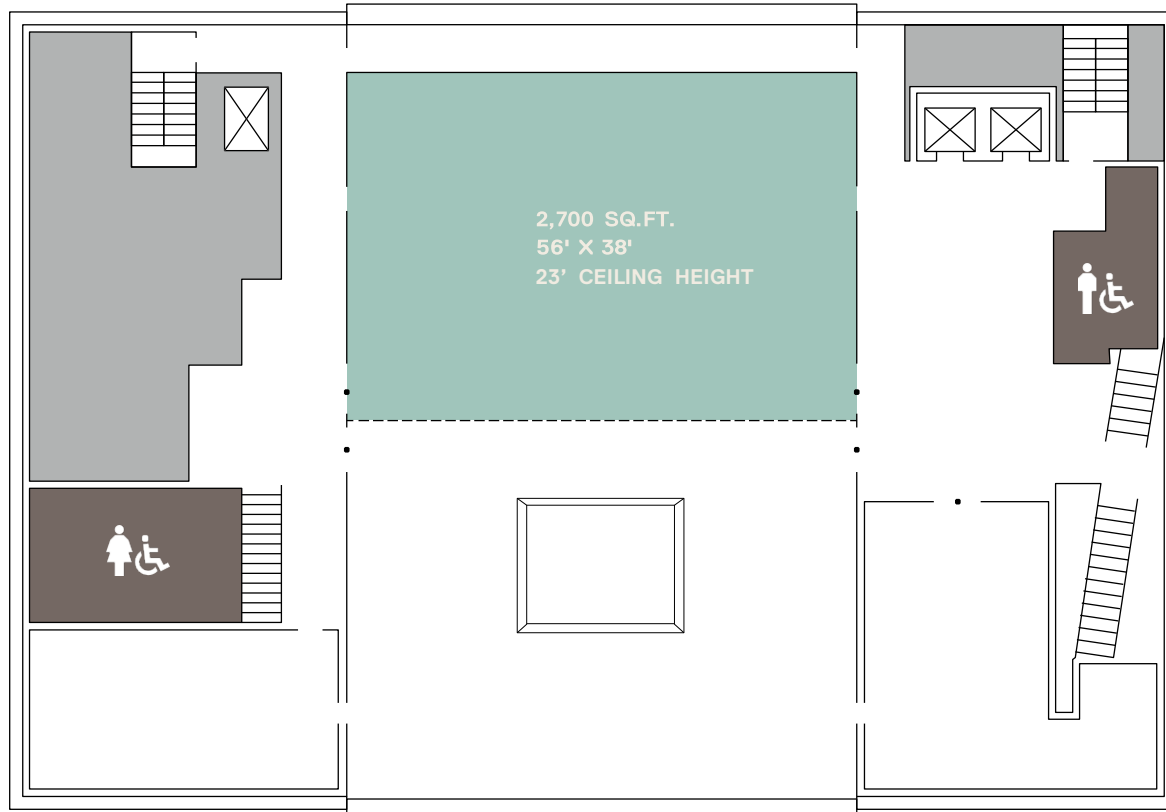
FLOOR 2

DIANE AND GUILFORD GLAZER CHAPEL

Featuring floor to ceiling windows and beautifully situated overlooking the Temple's historic dome makes this space ideal for any special event or gathering.

CAPACITY

SEATED: 125
RECEPTION: 225



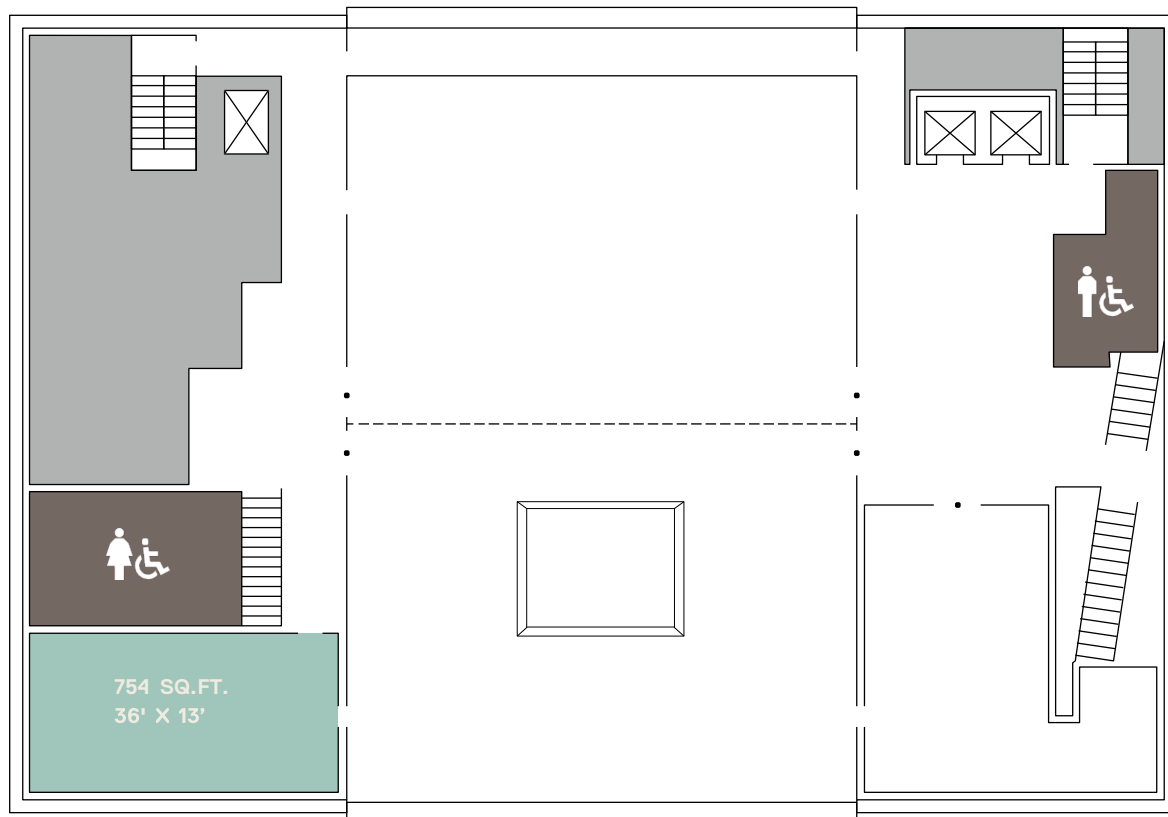
FLOOR 2

LESLIE AND MICHAEL FLESCH BOARD ROOM

Located high above the bustle of Wilshire Boulevard this meeting space provides flexibility for hosting meetings of nearly any size. A large meeting room with state-of-the-art AV capabilities for all of your meeting needs.

CAPACITY

SEATED: 25
RECEPTION: 55



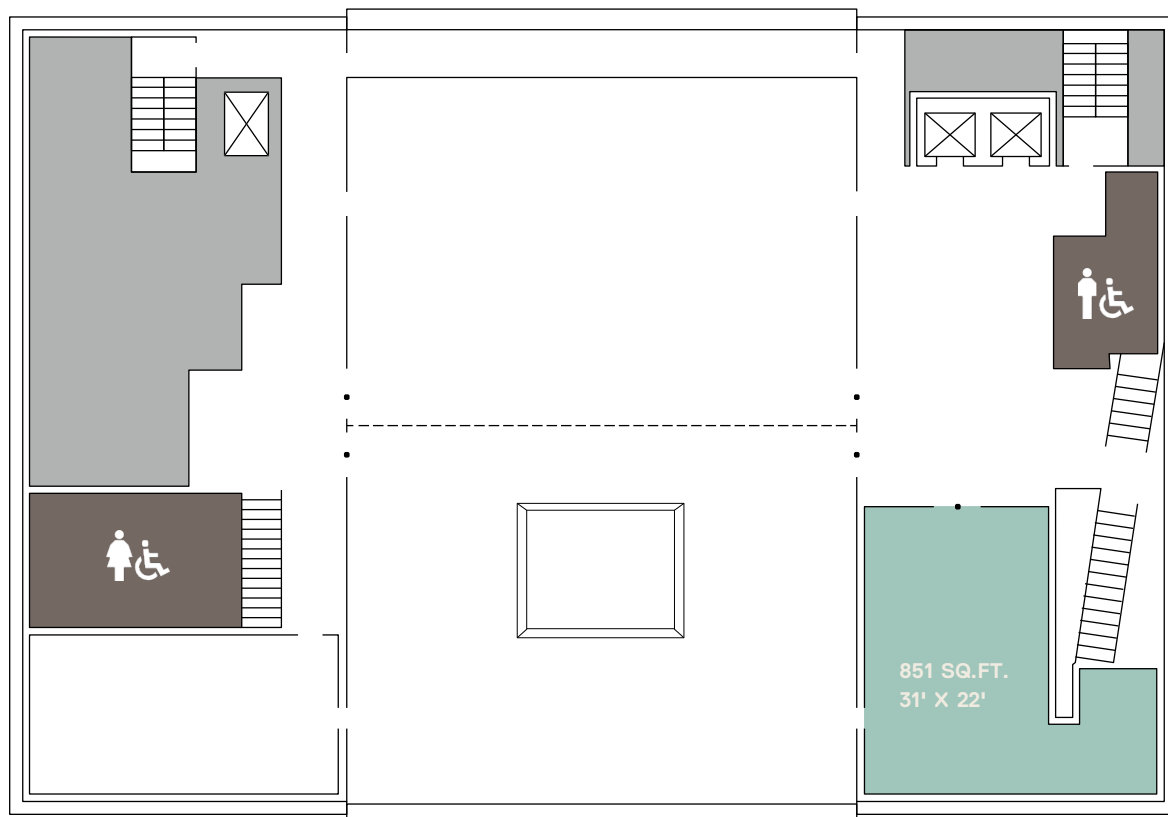
FLOOR 2

RABBI STEVEN Z. LEDER BOARD ROOM

The Board Room features a flexible meeting space with high ceilings and views of Wilshire Boulevard. This versatile space includes modular conference table that can be easily reconfigured for smaller groups, state of the art technology, and lighting that can be set for daytime use or for an intimate social gathering.

CAPACITY

SEATED: 35
RECEPTION: 65



FLOOR 2

ROOFTOP TERRACE

Surrounded by olive trees this graceful rooftop terrace with views of the Hollywood Hills and the City of Los Angeles, is perfect for cocktail receptions, or dinners for any occasion.

CAPACITY

SEATED: 150
RECEPTION: 275

